



## FEATURES

Solid brass construction  
Aerated water flow  
Single volume and temperature lever control  
Handshower with 5' reinforced PVC hose  
Pull-button diverter situated in front of the spout  
1/2" connection  
Featuring "easy fit" system

## FINISHES+

### Standard

polished chrome (pc)  
brush nickel (bn)

### Custom

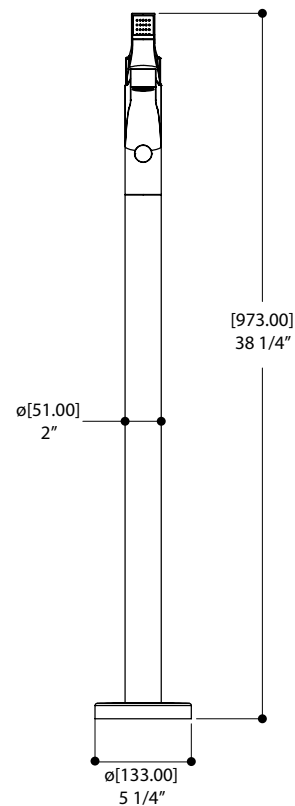
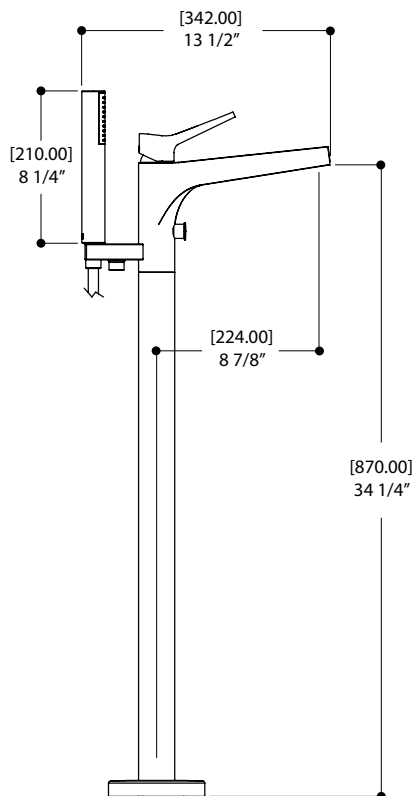
15 custom finishes available  
(ask your local Aquabrace authorized dealer for details)

## WARRANTY

Residential: limited lifetime warranty to original purchaser  
Commercial: two years warranty  
(Complete warranty available at [www.aquabrace.com/warranty](http://www.aquabrace.com/warranty))

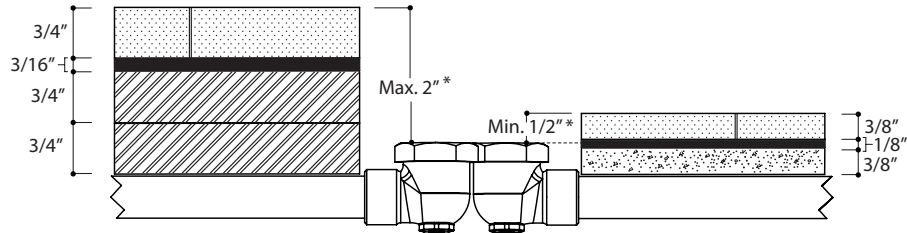
## SPECS AT LARGE

Overall spout projection: 13 1/2"      Flow rate (tub filler): 6.5 gpm  
CC spout projection: 8 7/8"      Flow rate (handshower): 2.5 gpm  
Total faucet height: 38 1/4"



# AQUABRASS

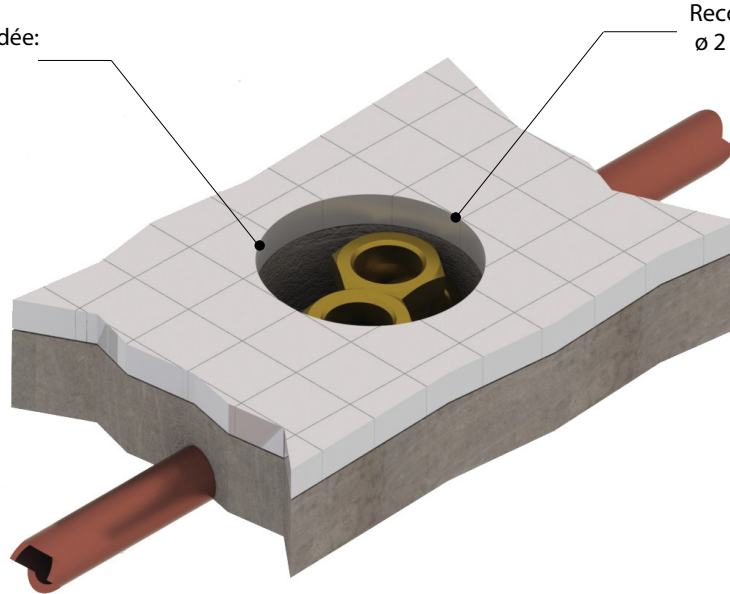
## "EASY FIT" a job-site friendly installation system



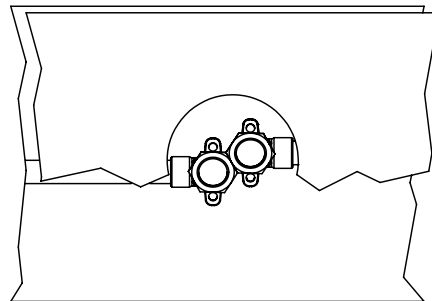
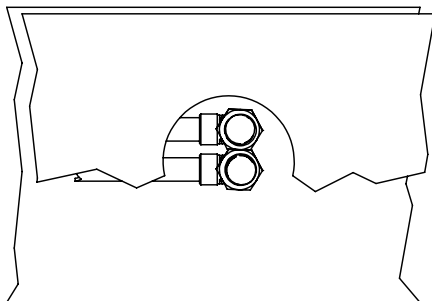
\* If set deeper, use standard commercially available male-female extension

\* Si c'est plus profond, utiliser une extension mâle-femelle standard

Ouverture recommandée:  
ø 2 1/2" ou moins



Recommended opening:  
ø 2 1/2" or less



Optimize your rough configuration for a minimum C-C between hot & cold inlets (see examples).  
The orientation of the pair of supply connections is independent from the final spout position.

Optimiser la configuration du brut pour minimiser le C-C entre l'entrée d'eau chaude et froide.  
L'orientation des alimentations n'a aucun impact sur la direction finale du bec.